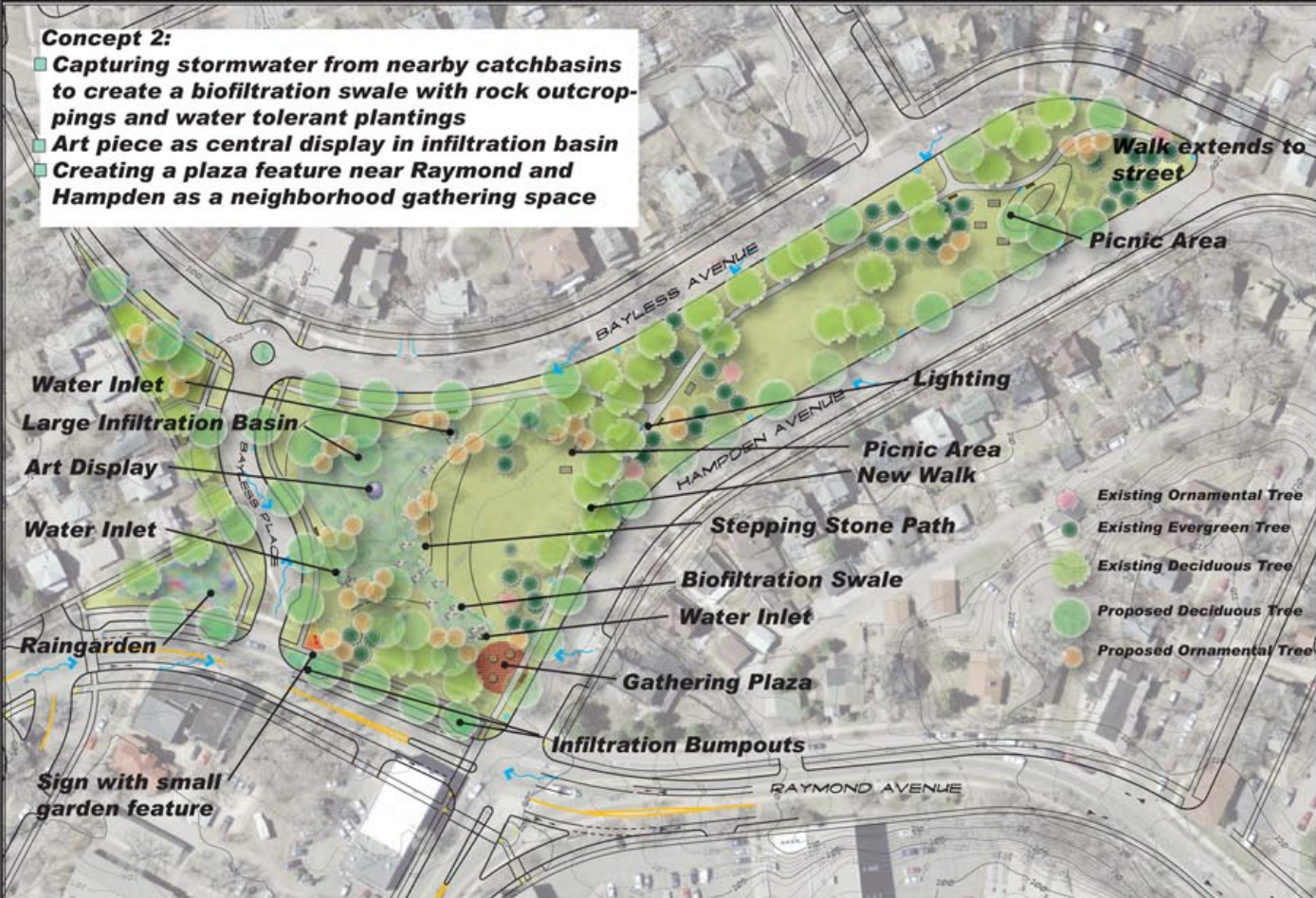


Concept 2:

- Capturing stormwater from nearby catchbasins to create a biofiltration swale with rock outcroppings and water tolerant plantings
- Art piece as central display in infiltration basin
- Creating a plaza feature near Raymond and Hampden as a neighborhood gathering space



HAMPDEN PARK

FEBRUARY 2010

CONCEPT 2

