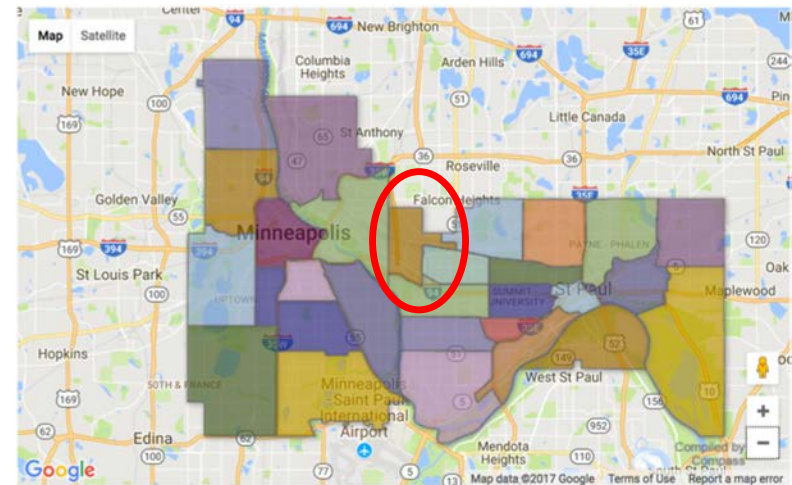


# St. Anthony Park Community Council

Formed in 1976 as one of 17 neighborhood districts  
to advise the City about community needs and desires

Comprised of:

- ❖ An elected and appointed, volunteer Board of Directors representing local residents and organizations plus 2 “at-large” positions
- ❖ Two paid staff members (usually)
- ❖ Four, volunteer standing committees:
  - Equity
  - Transportation
  - Land Use
  - Environment
- ❖ One volunteer subcommittee
  - Transition Town All St Anthony Park
- ❖ Occasional, volunteer Task Forces or special committees
- ❖ Serve as an umbrella for others, including SAP Community Garden



Health Partners  
Como Clinic

University of Minnesota  
St. Paul Campus

sppl.org

Public Library

spps.org

St. Anthony Park  
Elementary School

stpha.org

Como Ave.

Raymond Ave.

Railroad Tracks

Hampden Park Co-op

Seal Hi-Rise

St. Anthony Park  
Community Council Office

University Ave.

Highway 280

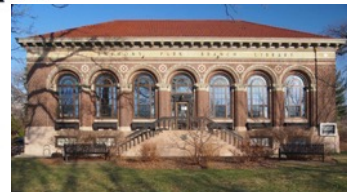
Bridge

finance-commerce.com

minnpost.com

parkbugle.org

sapcc.org





# Who are we?

Recent immigrants and old timers



People of Color

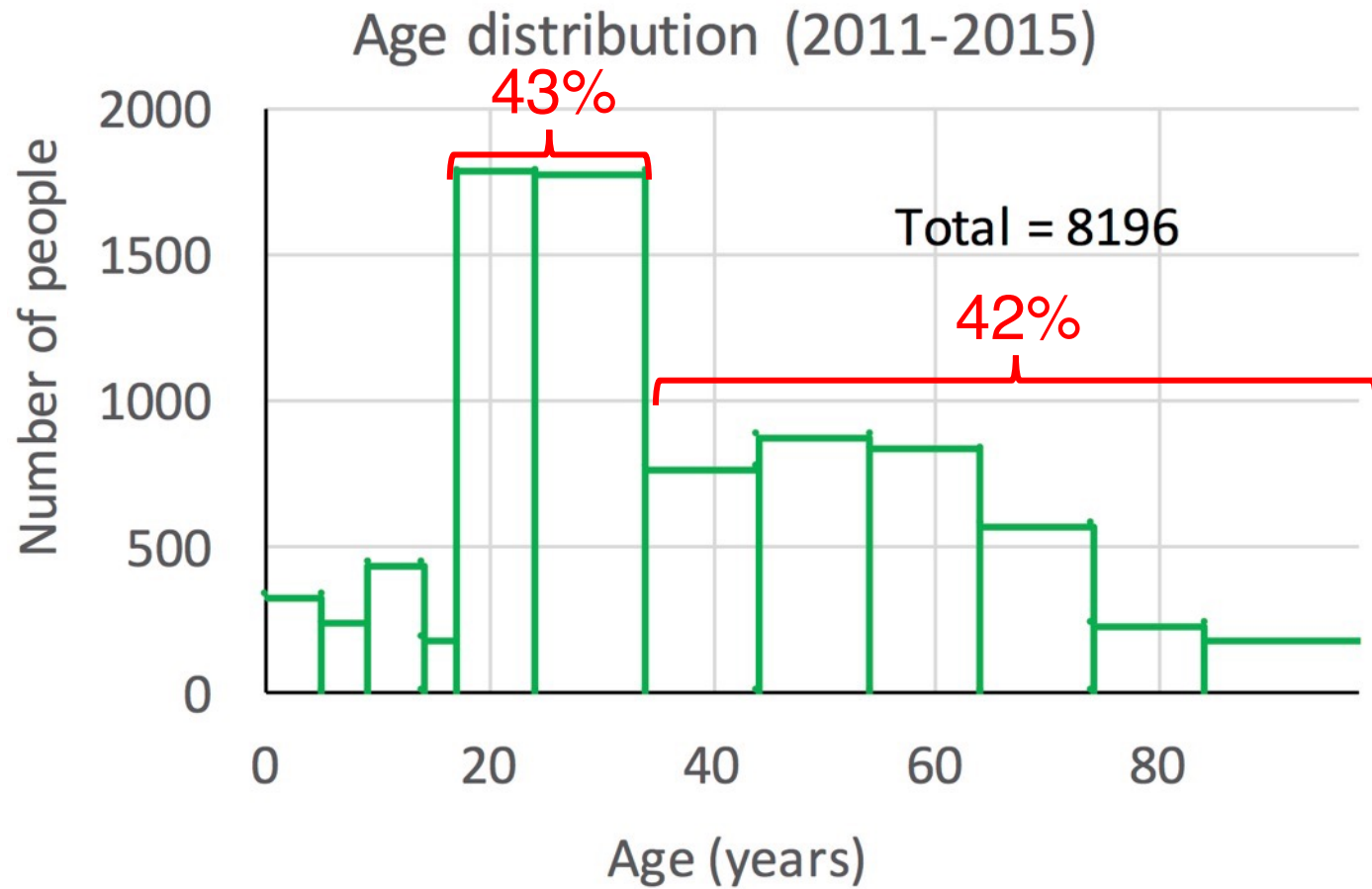


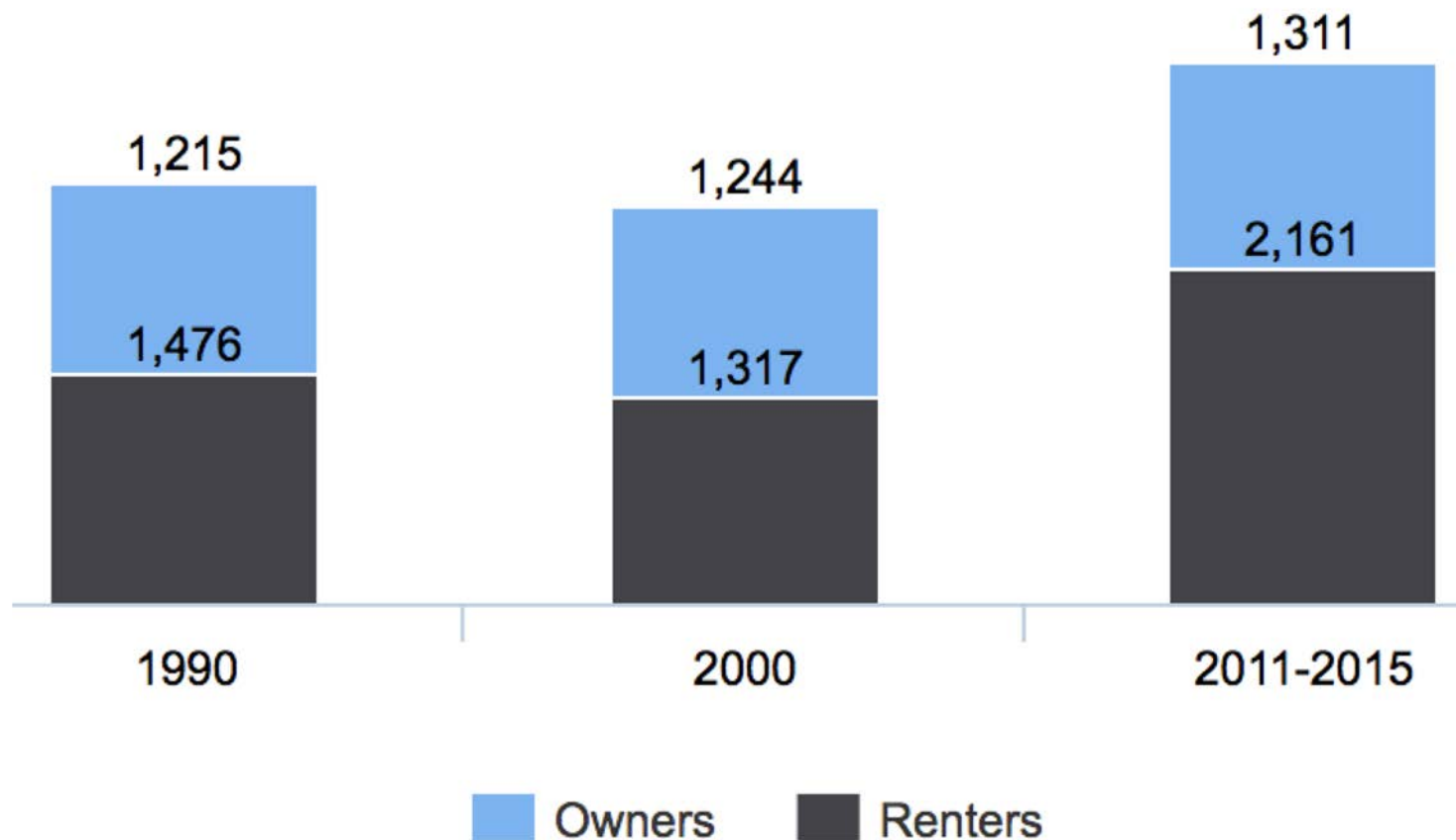
Young folks



Folks of all ages that dress funny sometimes

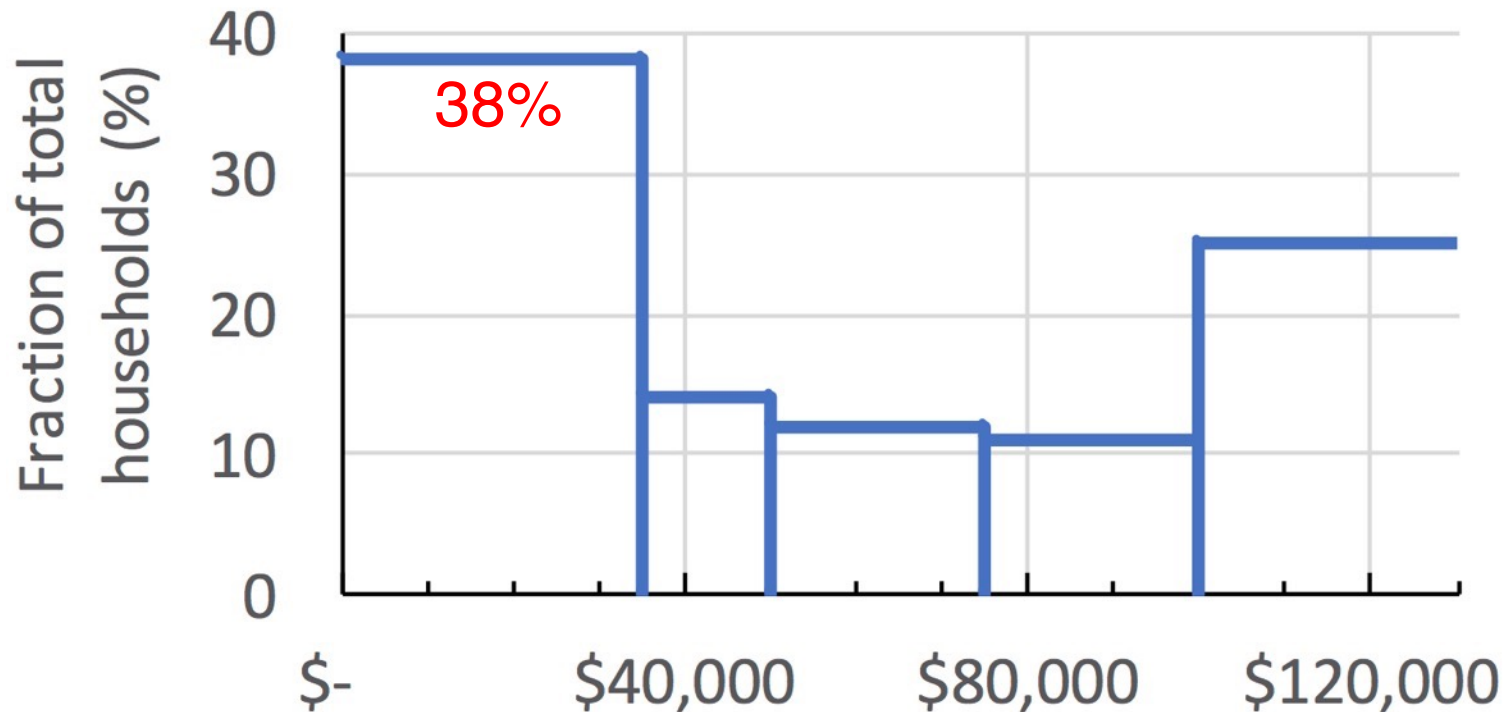






The number of rentals has increased 50% since the 2000 Census and is rising further with more housing along the Green Line

## Household income (2011-2015)



3486 total households

1593 with income below poverty level

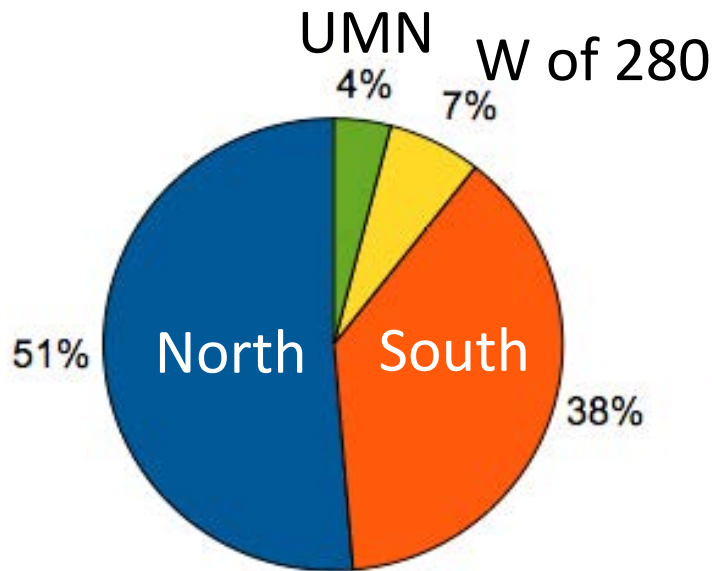
650 with income up to 149% of poverty level



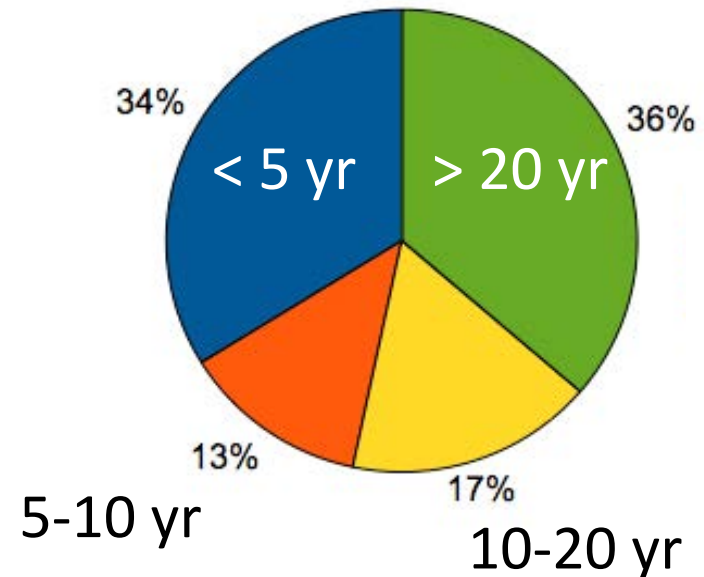
# Community Feedback

- ❖ 411 Online Survey respondents
- ❖ More than 300 canvassing and small-group respondents

Where do you live/work/play in SAP?



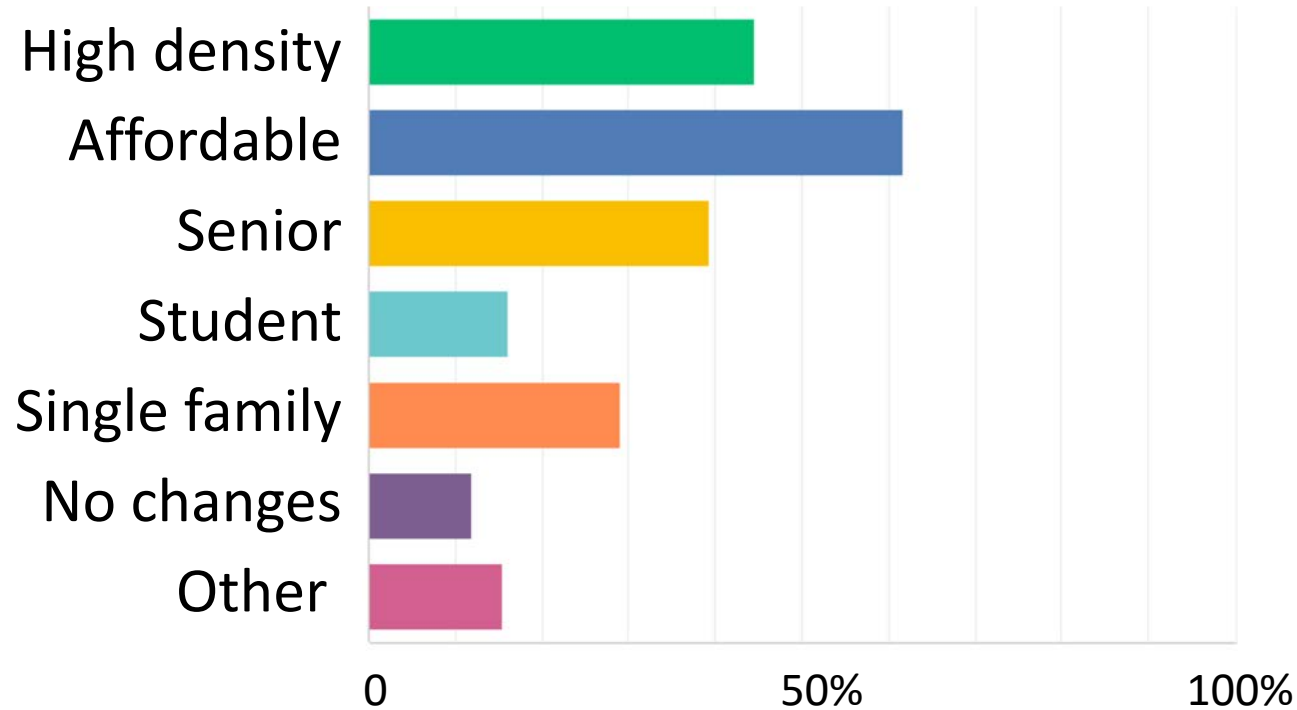
How long have you lived in SAP?



Well distributed by age, 65% female, 86% white,  
9% less than \$35k, 35% \$100k+

- ❖ 57 organizations – for-profits, non-profits, single proprietors

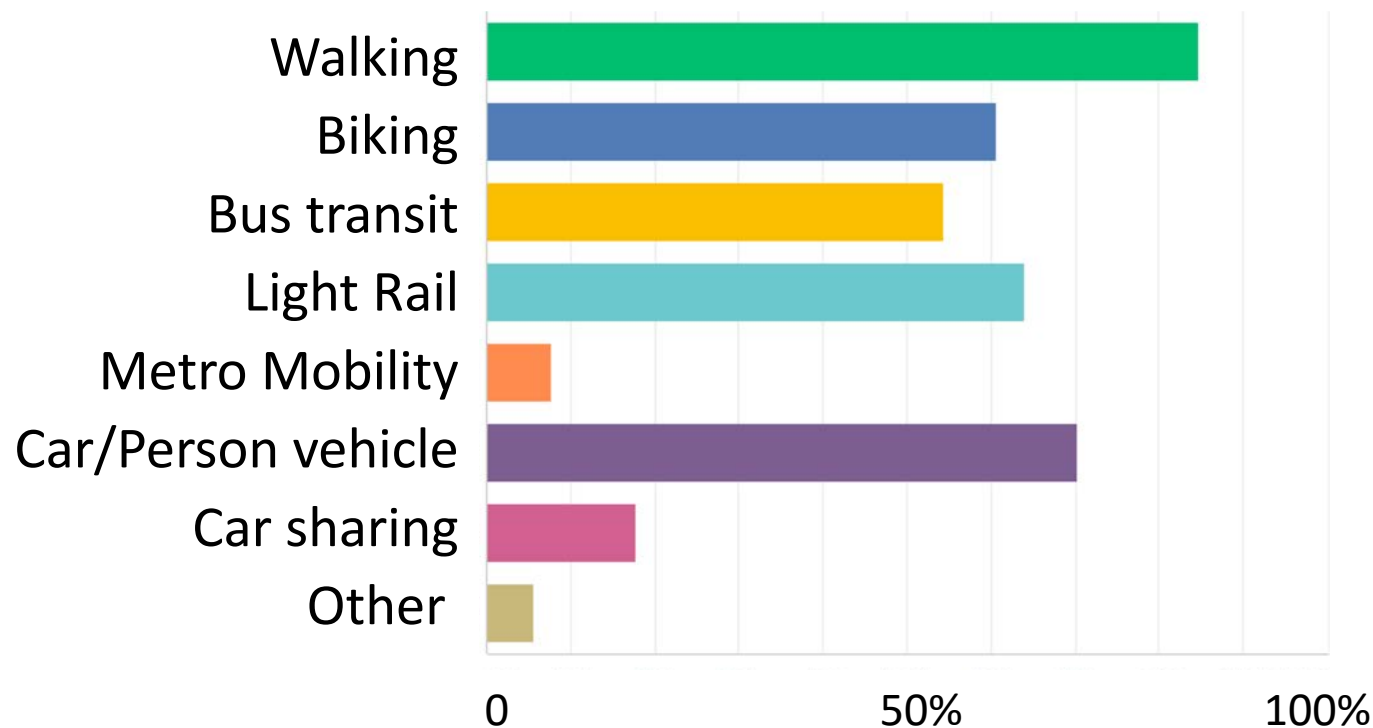
# What types of new housing will be needed in SAP over the next 10 years?



- ❖ Medium density, multi-generation, mixed income, mixed use, co-op housing options.
- ❖ Economic integration would add to vibrancy of neighborhood.
- ❖ Appropriate new development, affordable, contributes to neighborhood.
- ❖ Other development: restaurants, bars, small retailers open in evenings, co-working space.

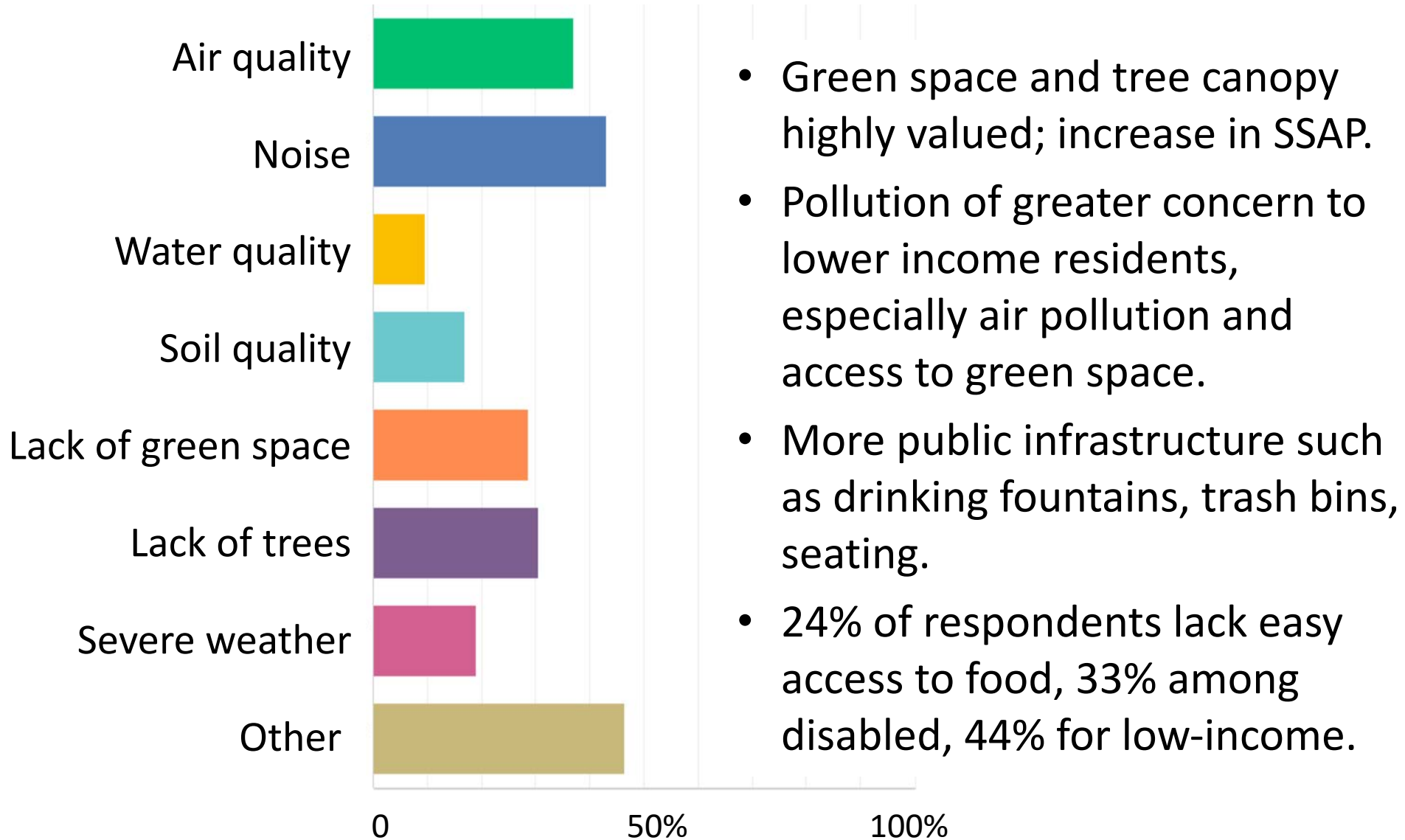


## What modes of transportation are a priority for you?



- ❖ Bus and LRT somewhat higher for respondents with lower income.
- ❖ Walking, Bus transit, Metro Mobility higher for disabled respondents.
- ❖ Many seasonal public transit riders;  
many want to increase use of public transit.
- ❖ Traffic and crosswalks high safety issue, especially among disabled.
- ❖ Recommend more bike racks, benches, signage,  
and better connections.

# What environmental concerns do you have?



## Three overarching questions:

- ❖ How do we ensure equitable access for all in housing, movement from place to place, jobs, and food?
- ❖ How do we respond to climate change, as a neighborhood within a city?
- ❖ How do we support the shift to a creative, more diverse economy?

# Equity at SAPCC

❖ Strategic Plan strives for “equity in all we do”

❖ Equity framework

- Engaging the whole community
- Including equitable language in the 10-year plan



❖ Identified five goals for the next 10 years



# Equity Priorities for the 10-Year Plan

- ❖ Mobility – fostering transportation accessible to all
- ❖ Affordability – encouraging equitable development
- ❖ Sustainability – maintaining public spaces for the our community
- ❖ Community – providing spaces to gather
- ❖ Food – improving access to fresh food year round



# Climate Change

To stop the drivers of climate change,  
we need to stop using fossil fuels.

- Make big reductions in the amount of energy we use.
- Increase generation of renewable energy,  
including in our own neighborhood.

Yet we have to be prepared to live  
with more severe weather.

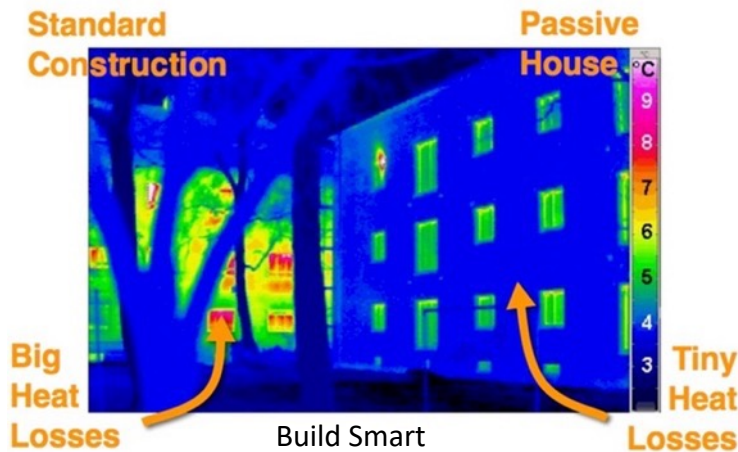
- Strengthen resilience of our infrastructure.
- Realize that social capital is crucial to our ability  
to respond in emergencies.

# Reduce our energy use.

- Increase awareness of options for food, transportation, and buildings.
- Promote retrofitting existing buildings.
- Encourage advanced energy requirements for new construction.



TC Habitat for Humanity



- Reduce waste with reuse, recycling, and composting.



MPR



# Increase local renewable energy generation.

- New buildings “solar ready.”
- Community solar gardens.
- District heating and cooling.





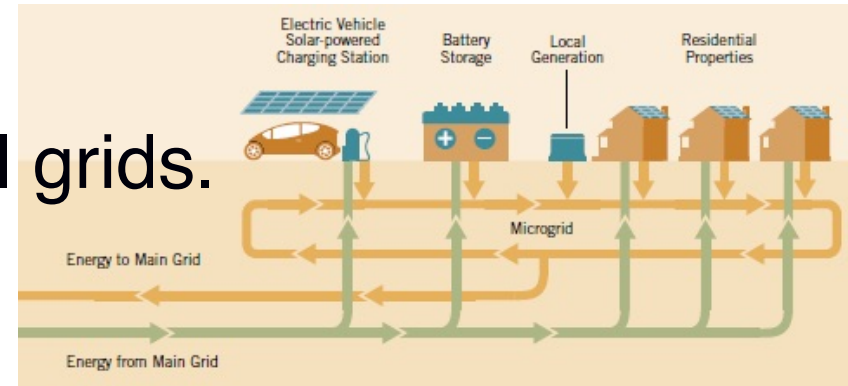
# Strengthen resilience to severe weather.

- Explore electrical options – emergency generators, local grids.
- Mitigate localized flooding.



- Know our neighbors and share contact info.
- Know which neighbors might need help and who can help.

Microgrid Knowledge

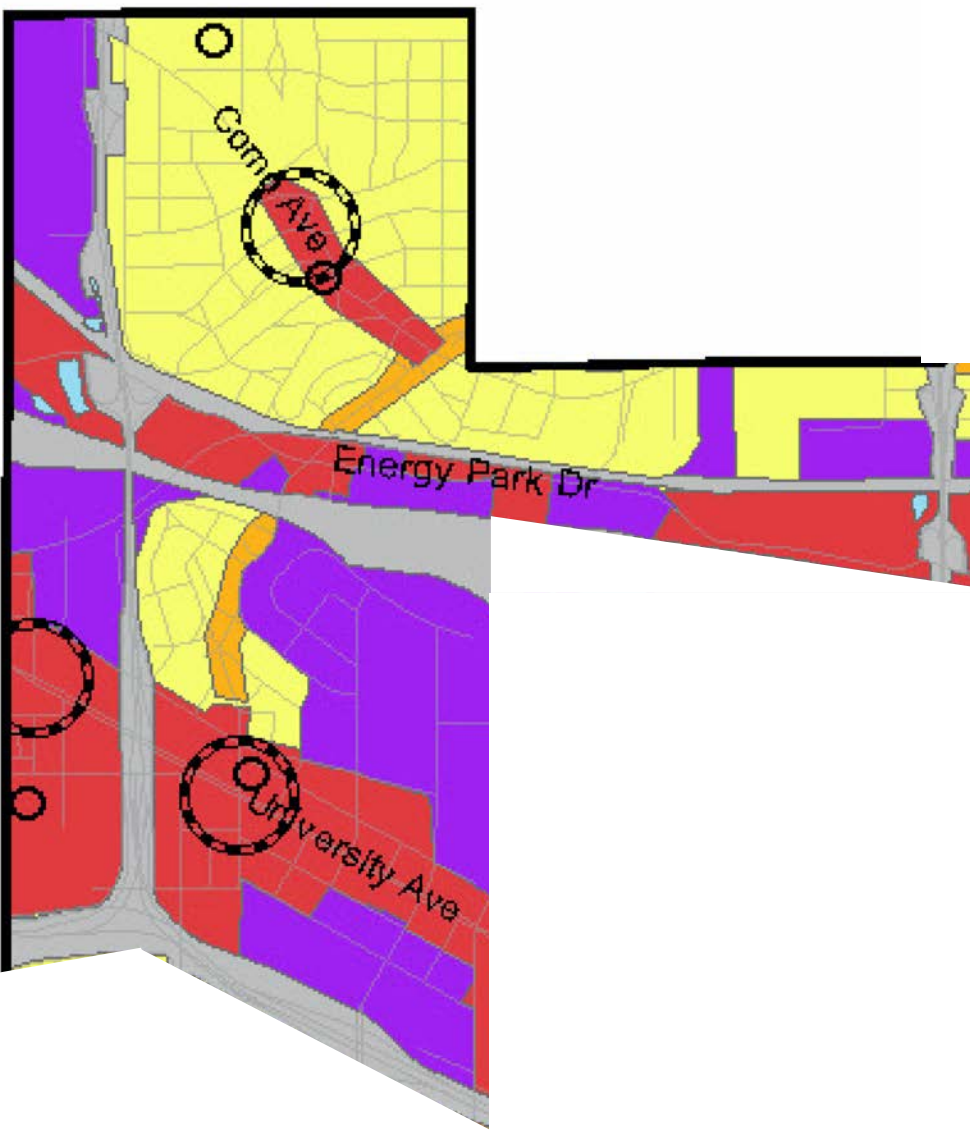


Portland Press Herald

# **Economic & Business Development**

Our EBD plan is about having a creative, diverse economy that supports equity, responds to climate change and considers historic preservation

There are different needs for neighborhood nodes and the Green Line Corridor/existing industrial area of SAP



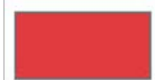
Neighborhood Centers



Established Neighborhoods



Residential Corridor



Mixed Use Corridor



Industrial



Transportation

## **Neighborhood nodes**

- ❖ Strengthen NSAP retail businesses by supporting parking and transit solutions and helping identify and transition to growing future needs
- ❖ Develop a “village center” in SSAP with walkable access to services
- ❖ Work with the City to make it easier to start a new business
- ❖ Support residents working from home



## **Green Line Corridor/Industrial area**

- ❖ Support zoning flexibility for mixed use – including housing and commercial/industrial
- ❖ Support district systems such as storm water management, district heating and shared parking
- ❖ Support art and creative enterprises as a catalyst for redevelopment
- ❖ Support infrastructure improvements to increase attractiveness for redevelopment

# Housing

## Density

- ❖ Current /Recent Projects – Union Flats, Weyerhauser, Ecumen, The Ray
- ❖ Several opportunities being reviewed
- ❖ Modify “Developer Guidelines” to maintain standards and align with our adjacent neighborhoods



# Housing

## Variety

- ❖ Families - Keeping our Community strong
- ❖ Seniors - Respecting people's desire to stay in SAP
- ❖ Makers - Making our community vibrant for artists, artisans, alternate work options



AP/Jacquelyn Martin



Thomas Dolan Arch.

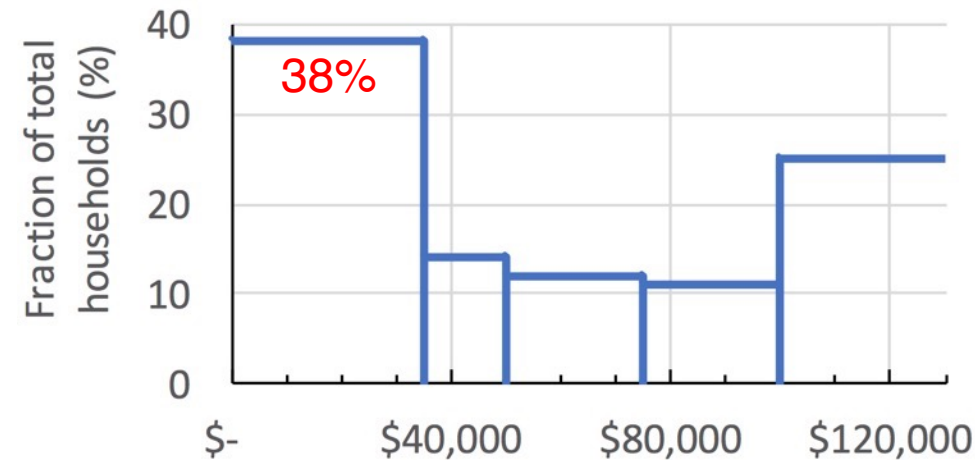


# Housing

## Affordability

- ❖ Affordable housing goal is that no family pays more than 30% gross income for housing
- ❖ Ten Year Plan calls for 30% of units built to be affordable
- ❖ Affordable / Market Rate mixed in same building or neighborhood

Household income (2011-2015)



MN Compass



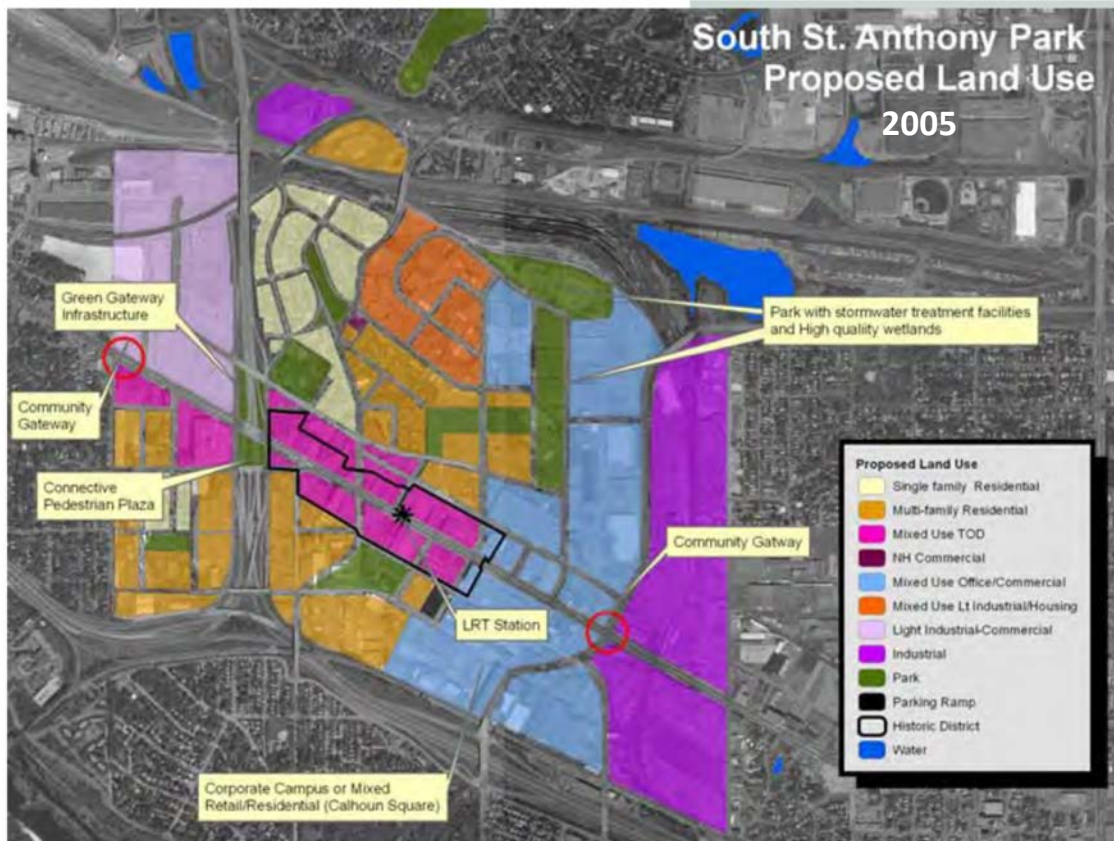
Schemata Workshop



# Housing

## Public Green Spaces

- ❖ All new housing should create public green spaces
- ❖ Green spaces to be on the property or contribute to communal spaces



# Historic Preservation

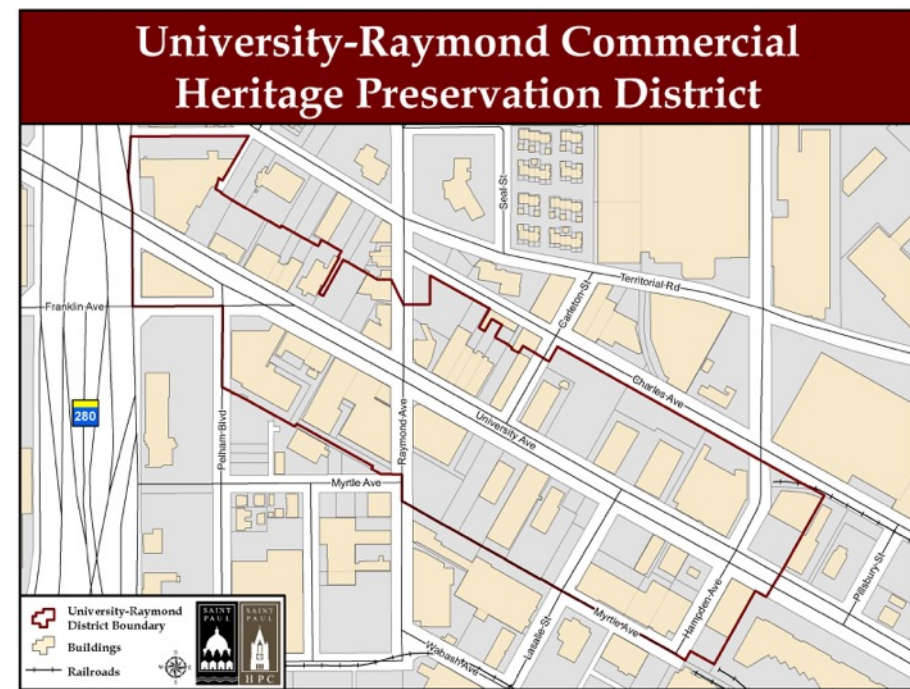


Historic preservation should be taken into consideration along with equity, climate change and shifting to a creative, diverse economy

- ❖ Identify historic resources
- ❖ Preserve areas with unique characteristics
- ❖ Protect designated sites
- ❖ Incorporate consideration of historic preservation into development and land use planning



# Historic Preservation



SP Historic Preservation

- ❖ Support resources for private maintenance and preservation of historic sites
- ❖ Use preservation to further economic development
- ❖ Provide opportunities for education & outreach about history of the area
- ❖ Promote historical interpretive signage



# Transportation

## *Primary Goal:*

Decrease dependence on cars in the neighborhood

Improve safety  
for pedestrians  
and bicyclists



Hit by a vehicle traveling at

20  
MPH



9 out of 10 pedestrians survive.

Hit by a vehicle traveling at

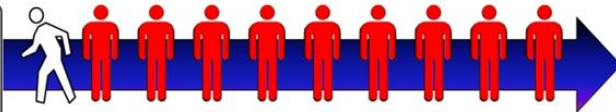
30  
MPH



5 out of 10 pedestrians survive.

Hit by a vehicle traveling at

40  
MPH



only 1 out of 10 pedestrians survives.

Pat Thompson



# Improve pedestrian connectivity and biking infrastructure





## Decrease impact of truck traffic



## Make parking use more efficient (shared, priced)



## Improve transit access and connectivity

### Enroll now in the Transit Assistance Program (TAP)

Effective Date: Jan. 11, 2018

#### Pay just \$1 for rides on buses and trains!

- Open to certified low-income residents ages 6 and up.
- Ride for \$1 per trip for one year!
- Pay your fare with an easy-to-use Go-To Card, which is protected against loss or theft.
- Add value to your card at any METRO rail ticket machine, Go-To Card outlet (including all Cub Foods stores), metrotransit.org or by enrolling in our Auto Refill program.



Alex Tsatsoulis





# Parks and Recreation



## ❖ Preserve, enhance, and increase parks and other green space

More walkways and benches

More public green space in developments, especially in South SAP

Seek public and private funding

Include green space in a freeway “lid”



# ❖ Support current and promote non-traditional uses

Langford Park Rec Center & Joy of the People

Broaden use; public gatherings, dog space, food production, pollinator habitat



Art on the Farm



Incredible Edible



Regula Russelle



Sherri LaRose



JOTP

## ❖ Eliminate the “food desert”

Expand gardening opportunities

Hydroponics/aquaponics, winter production

Increase food collection and distribution

## ❖ Maintain and expand the Community Garden



Food recovery  
from stores and  
restaurants

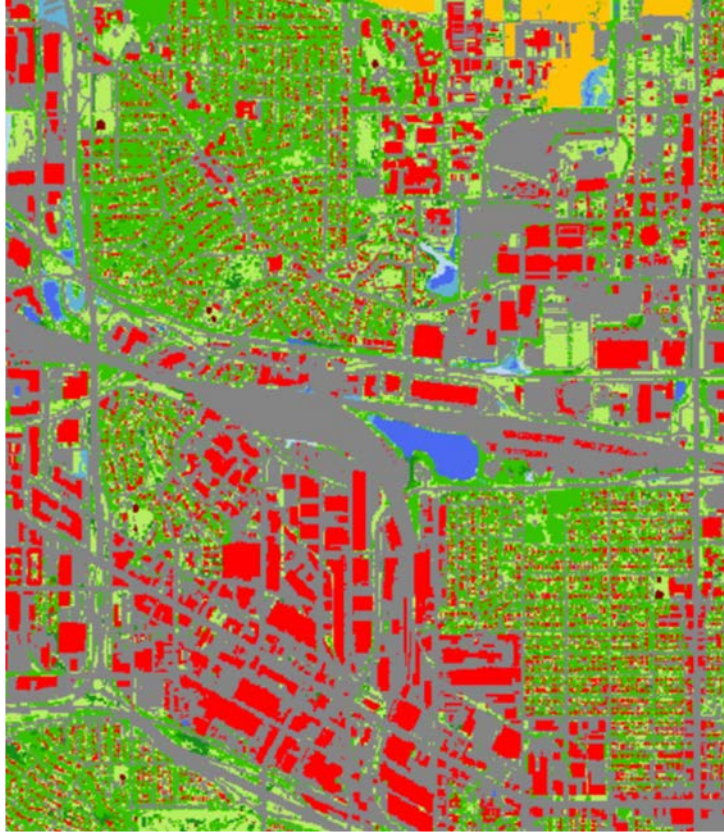


theaquaponicssource

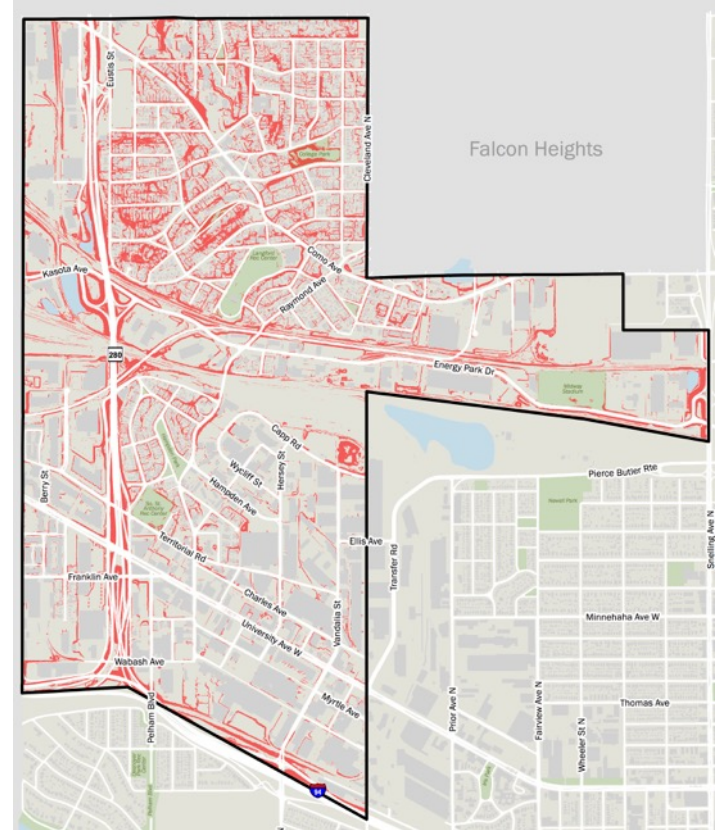
Deep Winter Greenhouse







Land cover 2015



Tree preservation plan  
> 12 percent slopes

- ❖ Enhance the urban forest
- ❖ Multi-use boulevards and rights-of-way
- ❖ Create a “rewilding plan”



# **Water, Soil, & Air**

The questions are **What?** and **So what?**

**Water** – Too much, too little, too dirty

Cleanup event  
9 am, April 14  
NAPA Auto Parts

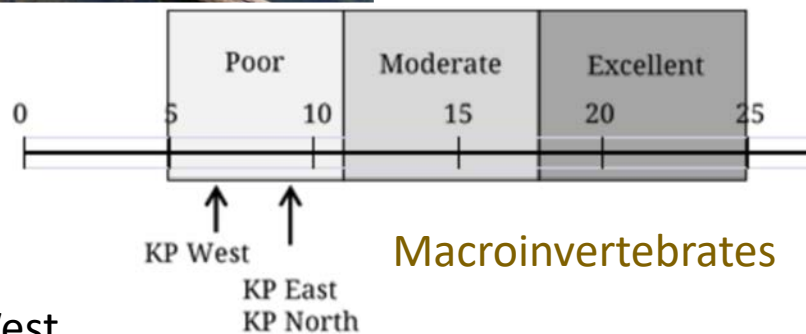
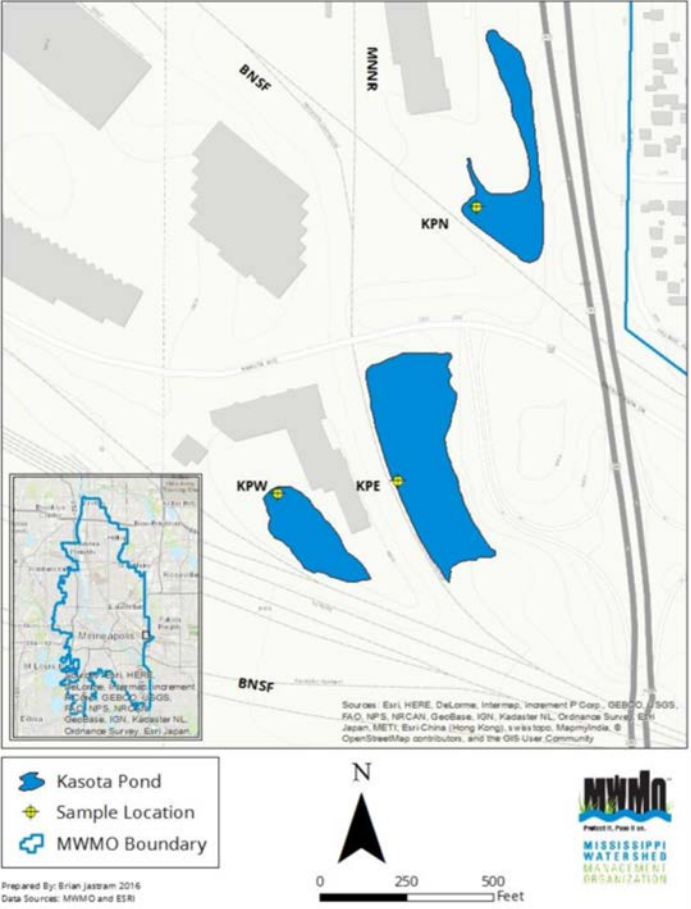
Kasota Pond North



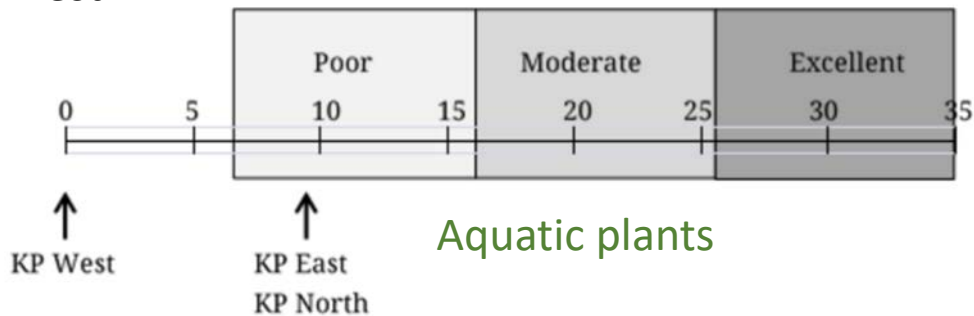
Kasota Pond East



**What?** Chloride  
**So What?**  
Index of Biological Integrity



Kasota Pond West



# **Water, Soil, & Air**

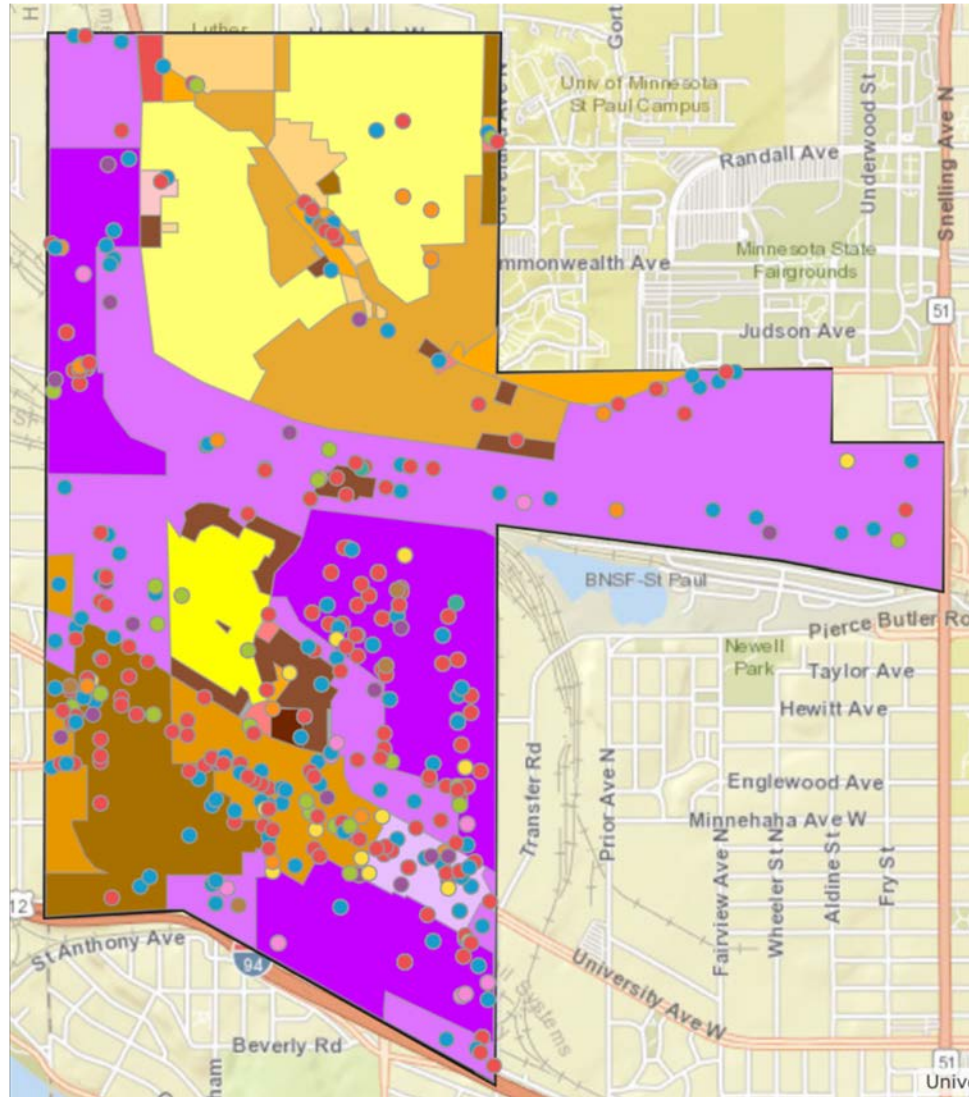
The questions are **What?** and **So what?**

**Water** – Too much, too little, too dirty

**Soil** – Commercial/residential operations, Traffic

# Interactive GIS map of MPCA sites

Public meeting will begin at **7 pm April 3 at SPNN**



# **Water, Soil, & Air**

The questions are **What?** and **So what?**

**Water** – Too much, too little, too dirty

**Soil** – Commercial/residential operations, Traffic

**Outdoor Air** – Dust, chemicals, vapors



# Community Air Quality Monitoring Project



Report by MPCA & MDH  
to the community  
7 pm, April 3 at SPNN



# **Water, Soil, & Air**

The questions are **What?** and **So what?**

**Water** – Too much, too little, too dirty

**Soil** – Commercial/residential operations, Traffic

**Outdoor Air** – Dust, chemicals, vapors

**Indoor Air** – Mold spores, radon, vapors

**Other pollution** – Noise, light, visual, litter